



# PROSPECTUS

St Thomas More School  
ELIZABETH PARK



**BRIGHT NEW SPACES!  
BOOK A TOUR TODAY!**



**BOOK A TOUR**

**[sttmore.catholic.edu.au](http://sttmore.catholic.edu.au)**

**08 7285 1500**

## **Acknowledgment of Country**

**Nudloo tumpuntea Kurna. Mirenya yarta. Mathanya Woma tartanyakoo**

We acknowledge the Kurna people are the land owners and custodians of the Adelaide Plains. We recognise Elders past and present. We are committed to Reconciliation. **Nachalia.** Thank you

## **Affordable Catholic education for our community**

Our school appreciates the changing needs and pressures our community faces. For this reason we are committed to maintaining our affordable fee structure implemented in 2019.

## Principal's Welcome



**At St Thomas More School we create an innovative and contemporary educational environment which resonates with students and their families, leading to a love of lifelong learning.**

Welcome to St Thomas More School, a Catholic school in the Mercy tradition delivering excellence in education to the Elizabeth area.

St Thomas More School's education model engages the whole person and is founded on the Mercy Values of compassion, courage, hospitality, justice, respect and service. These values are embedded into our curriculum to educate students with an understanding of the spiritual, intellectual, physical and social aspects of their lives.

We encourage a no-fail environment where learning, growth and resilience are encouraged in students to create life-long learners.

St Thomas More School acknowledges and recognises the traditional owners of the land, the Kurna people, and we encourage our Aboriginal and Torres Strait Islander students to develop their cultural connections. We also encourage this connection and understanding within the broader school community to help foster and develop reconciliation with Australia's first people.

Our parents and guardians form an integral part of our community. Parents and guardians are encouraged to be part of our school community and our staff enjoy building relationships with families.

We offer Reception transition days, kindy and preschool visits, and two Reception intakes per year. I encourage you to view our website and contact the school for further information and enrolment details. We host school tours regularly throughout the term and registrations can be made via our front office or website.

I invite you to discover more about St Thomas More School and learn how our contemporary curriculum and focus on the education of the whole person in the unique Mercy tradition provides each child with every opportunity to achieve success.

*Shaping our future together,*

A handwritten signature in black ink that reads 'Belinda Bennett'.

**Belinda Bennett**

Principal, St Thomas More School





## Our Story

St Thomas More School was **established** in 1960 by the Sisters of Mercy, with Sister Immaculata Coffey as first Principal and Sr Ruth Mullins as first teacher. The Sisters of Mercy are dedicated to serving those who suffer injustices related to poverty, sickness or lack of education.

**Our patron saint**, St Thomas More, was a statesman, scholar and author renowned for his wit and devotion to his faith. Canonised by Pope Pius XI in 1935, his feast day is celebrated on 22 June, a man who spoke up for what he believed was right and just, making him a fitting patron for our school.

The **St Thomas More monogram** is bounded by a circle symbolising God's all-embracing love, while the rays represent the Spirit's presence, enabling us to open our hands in friendship to our community as we journey together in growth, learning and faith.

## Our Vision, Mission, and Values

### Vision

At St Thomas More School, we create an innovative learning environment that fosters a love of lifelong learning, nurturing happy, balanced and productive citizens. In partnership with our Parish, we teach the Catholic faith and invite families to encounter the love of God.

### Mission

Inspired by our Catholic faith and in partnership with families and our wider community, we invite engagement in life to the full — across its personal, religious, civic, ecological and cultural dimensions.

### Values

Founded in the Mercy tradition, we value: relationships, respect for the dignity of each person, commitment to learning, justice and compassion, and opportunities to celebrate.



## Mercy Education Values



We encourage and practice **compassion** within our school and community by putting our Faith In Action with fundraising activities, promoting inclusion and kindness throughout our school.



Through our school policies and pastoral care, we create fairness and **justice** in our relationships with students, staff and families and in our daily interactions with others through words, actions and attitude.



We show **respect** and recognise we must earn our communities respect through our words, actions and attitudes. Students are encouraged to celebrate the goodness of others at home, school and in the general community.



Being kind, generous and welcoming to our friends, family and those we know is easy. We remove barriers that stop us from extending **hospitality** to ensure we are an inclusive and kind community.



**Service** is using our talents and gifts to help others, thereby enriching our classrooms, our school and our broader community.



To act with **courage** takes strength and resilience. Our school is a safe space where children can learn to be courageous through attempting difficult tasks, changing behaviour, taking action against injustice, or tackling personal difficulty.

## Enrolment Information

**Starting school is a significant and exciting time for children and their families.**

### When can my child begin school?

The main entry point for student enrolments at St Thomas More School is Reception, however we often accept families where children are seeking enrolment in other year levels.

In South Australia children begin school in the year that they turn 5 or 6 years old. When your child begins will be determined by their birth date.

To check when your child is eligible to being Reception please contact our Front Office on 7285 1500 or email [info@sttmore.catholic.edu.au](mailto:info@sttmore.catholic.edu.au)

Child turns 5 **before** 1 May  
Child can begin reception in Term 1 of the same year

Child turns 5 **after** 31 October  
Child can begin reception in Term 1 of the following year

Child turns 5 **between** 1 May and 31 October  
Child can begin reception in Term 3 of the same year



# LOOKING FOR A SCHOOL WHERE YOUR CHILD CAN THRIVE?

As Head of School of St Thomas More, Elizabeth Park, I would love to welcome your family into our primary school, where every child is known, valued, and nurtured.

I encourage you to book a tour and see for yourself if this is the right place for your child to begin their learning journey.

**Vicki Rubino**  
Head of School

## Enrolment Process

### 1 Book a tour

A tour is a great way to see if our school is the right fit for you and your family. We encourage you to book a tour at the beginning of the enrolment process. Book online at [sttmore.catholic.edu.au](http://sttmore.catholic.edu.au) or contact our Front Office on 7285 1500.

### 2 Complete and return your Application for Enrolment Form

To access our Application for Enrolment Form from you can:

- Download a copy of the form from our website [sttmore.catholic.edu.au](http://sttmore.catholic.edu.au)
- Collect an Enrolment Pack from our Front Office at 50 Yorktown Road, Elizabeth Park
- Request an email copy by contacting our Front Office on [info@sttmore.catholic.edu.au](mailto:info@sttmore.catholic.edu.au) or 7285 1500

### 3 Attend an Enrolment Discussion

Once your Application for Enrolment and required documentation has been received, our school will contact you to arrange an Enrolment Discussion with our Head of School, Mrs Vicki Rubino.

### 4 Offer of Enrolment

If your application is successful, you will receive an Offer of Enrolment which is a formal place at St Thomas More School. The enrolling parents/guardians will be required to sign and return the Acceptance of Offer to the school before acceptance is finalised.

**NOW ACCEPTING ENROLMENTS FOR MID-YEAR RECEPTION & YR 1**  
To enquire email [enrol@sttmore.catholic.edu.au](mailto:enrol@sttmore.catholic.edu.au) or call 7285 1500



# AFFORDABLE CATHOLIC EDUCATION FOR ALL

St Thomas More School aims to make our school accessible to all families who seek a Catholic education.

## Fee Structure 2026

Full Year	Term Payments x 3	Monthly Payments x 10	Fortnightly Payments x 20	Weekly Payments x 40
Commencing 23 February 2026				
\$990.00	\$330.00	\$99	\$45	\$22

## Financial Information

### Payment Methods

Families may choose to pay their school fees by direct debit, EFT transfer, BPAY, Cash/ EFTPOS, Qkr! or CenterPay. Families will receive an invoice at the beginning of each school year. At this time you can notify the school of your preferred payment method and complete the relevant form.

### Payment Plans & Late Fees

Alternative payment plans are available but must be approved by the Principal or Business Manager. Late payment fee of \$25 and a \$10 default of payments fee may occur if not previously approved.

### Financial Hardship

Families experiencing difficulty in meeting the fee requirements of the school can request assistance in writing for Fee Remission. An assessment will be made as to eligibility and an interview and/or supporting documentation requested to enable a confidential and considerate assessment of your circumstances.

### School Card

School Card is a Government scheme for families who meet the income threshold stipulated as part of the application. Eligibility is approved by Department for Education and Child Development. Applications can be completed and submitted online, alternatively forms are also available from the Front Office. School Card will not be applied until approval from DECD has been received. If you need support, please ask our Front Office.

For more information about Fees and Payments please contact our Business Manager **7285 1500** or [finance@sttmore.catholic.edu.au](mailto:finance@sttmore.catholic.edu.au)

## Outside School Hours Care (OSHC) and Vacation Care

**St Thomas More School OSHC is a valuable service open to families in the community. We offer Before School Care, After School Care, Pupil Free Days, and Vacation Care.**

Our OSHC service is managed by St Thomas More School who provide professional support to all their families and staff members. Our commitment is visible through our interactions and the strong, meaningful and respectful relationships staff build with the children.

To find out more about our OSHC Service or for a Fee Estimation please visit our website [sttmore.catholic.edu.au](http://sttmore.catholic.edu.au) or email [oshc@sttmore.catholic.edu.au](mailto:oshc@sttmore.catholic.edu.au)

### Service Hours 2026

Before School Care	6.30am - 8.30am	After School Care	3.00pm - 6.00pm
Pupil Free Day	6.30am - 6.00pm	Vacation Care	6.30am - 6.00pm

## School Curriculum

**Successful teaching and learning requires the need to provide a set of fundamental skills that are transferable and adaptable to whatever the future holds.**

As educators, we aim to provide learning environments that give students opportunity to make decisions, initiate ideas, persist, find out, try again, take risks, explore and research in a range of ways relating to their own interests.

We use a number of different research-based resources focusing on explicit instruction pedagogies to support our students at St Thomas More School. This includes but not limited to: InitialLit, Minilit Intervention, Primary School Literacy Resources and OCHRE Education, to develop our teaching programs aligned to version 9 of the Australian curriculum.

We provide students with a rich learning environment for all the following key learning areas:

ENGLISH	MATHEMATICS
RELIGIOUS EDUCATION	SCIENCE
HUMANITIES AND SOCIAL SCIENCES	THE ARTS
HEALTH AND PHYSICAL EDUCATION	TECHNOLOGIES
LANGUAGE (AUSLAN)	

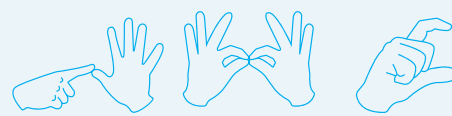
## Extra Curricular Programs

**We encourage students to take part in extra-curricular programs that serve their individual skills, talents, and interests.**

Catholic Schools Music Festival

Children's University Program

Sports Carnivals/Clinics for soccer, swimming, athletics, basketball, touch football, cross-country, basketball and more.



### **Breaking down barriers: Introducing Auslan to our St Thomas More School Curriculum.**

We are excited to present our students at St Thomas More School with the opportunity to learn Auslan.

Learning Auslan (*Australian Sign Language*) is a way to communicate with the Deaf and Hard of Hearing community in Australia.

There are several benefits of learning Auslan:

- » Learn to communicate with friends, family, and peers who use Auslan
- » Learn about Deaf-hood, cultural identity, and community membership.
- » Learn to see deafness as a difference, not a disability.
- » Develop neural pathways and cognitive processes unique to visual language.
- » Create an inclusive culture that supports all children and young people.

For more information about learning Auslan at St Thomas More School please contact us.



## Religious Education, Faith and Parish

**St Thomas More School is a Catholic school in the Mercy Tradition, therefore we include Religious Education lessons as part of our Curriculum.**

During Religious Education lessons students are supported to understand Scripture with a focus on values such as love, kindness, compassion and forgiveness. Children are encouraged to think about how they can demonstrate these values in their everyday lives.

As a Mercy school, the mercy values are embedded within the curriculum and everyday teaching. These values are central to our school and are actively and explicitly taught to students throughout their educational journey.

Throughout their schooling, all students are invited to participate in social justice activities relating to Caritas and Project Compassion, St Vincent De Paul and other worthy causes.

Students are immersed in experiences such as:

**Class Prayers,  
Liturgies, Masses**

**Social Outreach  
Initiatives**

**Whole School  
Masses**

**Social Justice  
Activities**

Families are most welcome to join their children during these celebrations throughout the year.

St Thomas More School uses the Religious Education Curriculum (Crossways) developed by the Archdiocese of Adelaide as the basis for its offerings in Religious Education. Hand in hand with this curriculum is "Made in the Image of God", the official program for teaching Human Sexuality.

### Parish and Sacramental Program

St Thomas More is part of the Elizabeth Catholic Parish.

The Sacramental Program is Parish-based and is a program supported by our school. The Sacramental Program prepares children to celebrate the four Sacraments of Initiation; Baptism, Reconciliation, Confirmation and First Holy Communion.

As the most significant education in faith occurs within the context of the family, the year level of your child at school is not the best way to decide the right time for your child to begin preparations to celebrate the Sacraments. For further information feel free to contact the Parish on 8255 1191.





## Uniform and Presentation

**Wearing the school uniform reflects our identity not only at school but also within the wider community. The uniform is an important part of our school tradition. Our hope is that children wear their uniform with a sense of pride and belonging.**

Following attendance on excursions, positive comments are often received regarding our students, and they identify the school through the school uniform. The wearing of the uniform not only reflects who we are but it eliminates any competition and fashion wear as well as any arguments with parents/caregivers at the beginning of the day regarding what to wear to school. All St Thomas More School's students are required and expected to wear the correct uniform. If students are not wearing the correct uniform, a uniform note will be sent home from the class teacher identifying the uniform area to be addressed.

### How to find out more about our Uniform

For more information regarding our school uniform code, price list, please visit our [website](#), call **7285 1500** or email [info@sttmore.catholic.edu.au](mailto:info@sttmore.catholic.edu.au). The Uniform Shop is located in our Front Office and operates by appointment, Monday- Friday, 8:30am to 3:30pm.

## Canteen and Breakfast Club

**Offering fresh, nutritious meals which are aligned with the South Australian Government's Right Bite guidelines, the service offers an extensive menu of options for families.**

St Thomas More School houses its dedicated canteen service on site in the Jubilee Hall building, from Tuesday to Friday.

Our canteen relies on parent volunteers to help prepare orders. Parents who are able to help with canteen duty are asked to contact our Front Office to find out more.

The full canteen menu and orders are facilitated via the school's payment gateway Qkr! which can be accessed via our website or through the Qkr! app on mobile devices.

Orders for the school canteen can be made through Qkr! or the classroom lunch order box.

## Family Involvement and Communication

**We promote a strong connection between school and home. We strive to work in partnership with parents and families to support each child's learning.**

Parent and Guardian involvement plays an important role in building a strong sense of community at St Thomas More School. Our families are encouraged to support the school in a variety of ways such as listening to children read, assisting in the canteen and supporting children at sports carnivals and on excursions.

### Volunteer

Every person who volunteers at our school needs to have a Working with Children Clearance and be registered as a volunteer. There is no extra cost to become a registered volunteer, and once you have your Working With Children Check (which can take some weeks to be processed, and is valid for five years) you are able to accompany children on an excursion, help in the classroom, canteen or in any way where you may have contact with the students. To register your interest in becoming a volunteer, please contact our Front Office on 7285 1500 or visit our website.

### The School Board

The School Board is one formal parent group that supports the life of our school community. The School Board welcomes new members each year.



### Family Communication

We have several platforms that you can utilise to engage with the school, and your child's teacher.

Each platform serves a different purpose. When you make your decision to enrol your child at St Thomas More School, you will be given more information about these platforms. In the meantime, you can discover more about our Communication methods on our website.

## Student Wellbeing

We are committed to student wellbeing through a variety of whole school programs and preventative strategies aimed at supporting us to build positive relationships between staff, students and our parent and guardian community.

**HELP OUR STUDENTS TO  
FEEL SAFE, HAPPY, AND A  
SENSE OF BELONGING TO  
OUR SCHOOL COMMUNITY**



## LEGO® Club

LEGO® Club is a play-based approach used to encourage the development of students' communication and social skills. Students work in small groups, each fulfilling a role to construct a model with the guidance of a facilitator.

## 5-Point Scale

The 5-point scale is a whole school strategy used to support students with regulation, develop consistent language between educators and students, promote social-emotional understanding and assist with smoother transitions between classrooms each year. The 5-point scale is a concrete, systematic and non-judgmental way of teaching social and emotional skills to help children notice and functionally respond to their own and other's social behaviour.

With their teacher's guidance, students create their own individual scales and review them at allocated times. The review process of the 5-point scale is an important aspect, ensuring that it remains relevant to the student and continuing to work for them. Staff training is provided to ensure consistency across the school as well as family information sessions, strengthening the connection between school and home.

## Restorative Practice

At St Thomas More School we implement a whole school teaching and learning approach named Restorative Practice that is based on values including empathy, respect, honesty and accountability. At the heart of Restorative Practice is a focus on repairing and strengthening relationships and restoring harmony in classrooms and across the whole school community.

## School Counsellor

We value the importance of supporting children's social and emotional needs. Our School Counsellor supports children in a variety of ways, working one to one, in small groups, whole classes and year level cohorts. They help children to work through conflict, develop friendship skills, resilience, self esteem, body image and many other skills. They also plays a vital role in providing support to our families on a needs basis.

## Peaceful Kids

Peaceful Kids is a Mindfulness, Positive, and Psychology-based program to lessen anxiety and worries and increase resilience in children. Peaceful kids aids to:

**Lessen symptoms of anxiety and worry**

**Empower children to self-calm**

**Build emotional resilience and intelligence**

**Teach life-long skills to manage stress, and prevent build up**

**Remind children they are not alone with their suffering of anxiety**





08 7285 1500



[info@sttmore.catholic.edu.au](mailto:info@sttmore.catholic.edu.au)



[www.sttmore.catholic.edu.au](http://www.sttmore.catholic.edu.au)



50 Yorktown Road, Elizabeth Park SA 5113

#### **Principal**

Belinda Bennett

#### **Head of School**

Vicki Rubino

#### **Assistant Principal, Religious Identity and Mission (APRIM)**

Melissa Musolino

#### **Leader of Teaching and Learning - Curriculum**

Michael Clifford

#### **Leader of Teaching and Learning - Wellbeing**

Matt McGinty

#### **School Hours**

Monday - Friday 8.45am - 3.00pm

#### **Break 1**

10.50am - 11.00am (eating time)

11.00am - 11.30am (play time)

#### **Break 2**

1.20pm - 1.30pm (eating time)

1.30pm - 2.00pm (play time)

The school yard is supervised every morning from 8:30am. Children arriving before 8:30am or remaining past 3:15pm are asked to join OSHC. This will incur a fee as per the fee schedule.

Visit our website for more information.